

PROOF

A play by David Auburn





Director's notes

Warren Bartik - Director

I first saw *PROOF* at the Sydney Opera House in 2003. I knew nothing about the play but was captivated by the production that featured Barry Otto and Jacqueline McKenzie as the leads such that *PROOF* has always remained a drama I have wanted to direct. The enigmatic young woman, her controlling sister, their brilliant father, and an unexpected suitor are all pieces of a puzzle within the search for truth behind a mysterious mathematical proof. I found the play absorbing with its themes of mathematical quest, envy, trust, acceptance, mental illness and genius and its impact. In Australia up to 25% of children live in a household where a parent has a mental illness and these children inevitably take on the carer role for their parent and are themselves at higher risk for emotional, behavioural or mental health problems at some stage in their lives. Mental illness touches us all in some way and the characters in *PROOF* could be your neighbours, friends, or indeed family members. Hopefully the experience of this play goes some way to help break down the stigma of mental illness that still remains one of the biggest impediments to seeking help. So now off the 'soap box', *PROOF* also offers many funny and observant lines about ourselves and the quality of our relationships. Originally set in Chicago, I have brought the play to modern day Australia and Armidale as this helps it resonate as real. I have been fortunate to work with a small but talented cast who have embraced their roles with energy and enthusiasm for my vision for this show. Thank you to the production team for their support and the many others who have contributed in some way. I hope you go away from this ADMS production of *PROOF* as enthralled as I was 14 years ago.

PROOF

An Amateur Production By Arrangement with ORiGiNTMTheatrical,
on behalf of Samuel French, Ltd.

Production Team

Director	Warren Bartik
Producer	Neil Horton
Stage Manager	David Young
Production Engineer	Pat Bradley
Lighting Design	Anthony Carlon
Lighting/Sound Operation	James Wood/James Durham
Properties Manager	Pam Menzies
Publicist	Marney Tilley
Set Design	Warren Bartik
Poster/Program	Greg Balcombe/Sarah Watson
Photography	Cary Bennett
Front of House Managers	Marney Tilley, Deborah Hunter
Front of House Team	Neil Horton, David Trestrail, Peter Crick, Ros Brady, Anne Cunningham, Lisa Quast, Stella Quast, Robyn Slocombe, Benjamin Thorn, Margaret Kennedy, Carolyn Shepherd, Gordon Cope, Cathie Lamont, Anita Brown, Michael Gibson

Acknowledgements/Set construction

The Armidale School, Madeline Link and Armidale Express, Gordon Cope, Ros Brady, Deborah Hunter, Lisa Quast, Greg Quast, Stella Quast, Sarah Watson, Jacob Hunt, Amy Roff, Greg Balcombe, David Young, Colin Butters, Warren Bartik, Pat Bradley, Bruce Menzies, Neil Horton

Cast in order of appearance



Greg Balcombe - Robert

Greg's ADMS productions include *Titanic* - Mr. Andrews, *Sweeney Todd the Demon Barber of Fleet Street* - Sweeney Todd, *God's Drawing Board* - God, *Into the Woods* - The Baker, *Blood Brothers* - Narrator, *Blithe Spirit* - Charles Condomine, *Legally Blonde* - Prof Callahan, *Urinetown* - Caldwell B. Cladwell, *The Hatpin* - Charlie Makin, *Jesus Christ Superstar* - Pilate. Other roles include Frank - *Educating Rita*, Reg - *Table Manners*, The Actor - *The Woman in Black*, Manny - *Up For Grabs*, Sir Peter Teazle - *School For Scandal*, Dr Neville Craven - *The Secret Garden*, John Jasper/Clive Paget - *The Mystery Of Edwin Drood*, Lucky - *Dames At Sea*, John the Baptist/Judas - *Godspell*, Niko - *Zorba*, Molokov - *Chess*, Guiseppe - *The Gondoliers*, Ko Ko - *The Hot Mikado*, Noel Coward - *Red Hot and Cole*, Frank Crutchley - *Busman's Honeymoon*, George Grossmith - *Tarantara*, *Tarantara*. Greg is also a founding member of Opera New England. He believes the subject matter in *Proof* is important to raise the awareness of mental health within families and hopes you enjoy the performance.



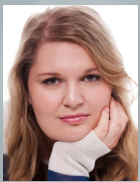
Amy Roff - Catherine

Amy has recently graduated from the Hunter School Of Performing Arts in Newcastle and is enjoying spending time with her family in Armidale. Her recent productions include *Spamalot* - Lady Of The Lake, *Little Shop Of Horrors* - Ronette, *Jesus Christ Superstar* (National Theatre Company), *Bustown* - Sylvia and is a 2016 graduate of the *Talent Development program* (Sydney). Amy has a love of singing and has performed in various musical productions throughout Newcastle, Sydney, Brisbane and Armidale over the past two years. Amy feels very lucky to be acting alongside a very talented cast and hopes to study theatre at a higher level in the future.



Jacob Hunt - Hal

Jacob is a young actor who has burst onto the Armidale theatre scene in recent months, after a youth spent in the proverbial acting wilderness. At just 19 years of age, he already has such accolades as Best Film at the *North West Film Festival* in Bingara, one IMDB credit, and a breakthrough performance as the stunning trifecta of Sir Lancelot, the Knight of Ni and Tim the Enchanter in *Spamalot* on the ADMS stage earlier this year. He is excited to take on the dynamic role of Harold Dobbs, and hopes that he can bring something new and refreshing to the character that will prove to be entertaining and challenging for the audience.



Sarah Watson - Clair

For AIM: *Eat Me* - Barb, *Her Naked Skin* - Florence Boorman, *Elektra* - Clytmenstra, *Closer* - Alice, *Aftershocks* - Lyn, *Lock & Key* - Ensemble, *Under Milk Wood* - Ensemble. For ADMS: *Les Liaisons Dangereuses* - Marquise de Merteuil, *The Long Road* - Emma, *Blithe Spirit* - Mrs Bradman, *Beautiful Thing* - Leah, *Blood Brothers* - Linda. Other theatre: *Annie! The Musical* - Miss Hannigan, *Reasons to be Pretty* - Steph, *Twelfth Night* - Olivia, *Bug* - Agnes, *Othello* - Desdemona. Film: *The Long & The Short Of It* - herself, *I Love You* - Her, *The Misadventures of Jack Stone: The Marble Pheasant* - Marble Astor.

Training: Sarah has a Bachelor of Performance from the Australian Academy of Dramatic Arts.

Setting - The back yard of a house in Armidale

ACT 1	Sc 1 - Night	ACT 2	Sc 1 - Late Autumn afternoon – four years earlier
	Sc 2 - The next morning		Sc 2 - Morning – an instant after the end of Act1
	Sc 3 - That night		Sc 3 - The next day
	Sc 4 - The next morning		Sc 4 - Winters night – three and a half years earlier
			Sc 5 - The present – a week after events in Sc3.

TAS JUNIOR SCHOOL PRESENTS



30 NOVEMBER — 3 DECEMBER

TAS HOSKINS CENTRE



TAS
THE ARMIDALE
SCHOOL

Seussical
THE MUSICAL JR.

DIRECTED BY
LEASA CLEAVER

www.as.edu.au

